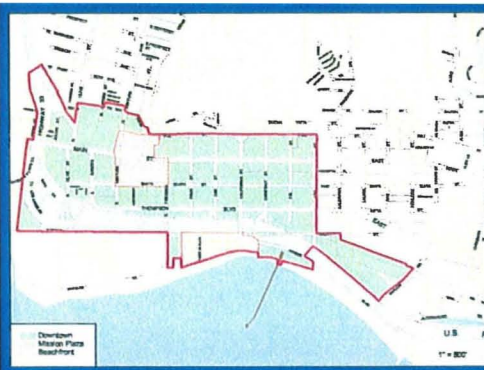
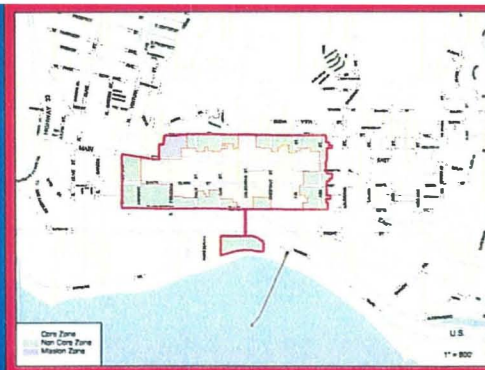




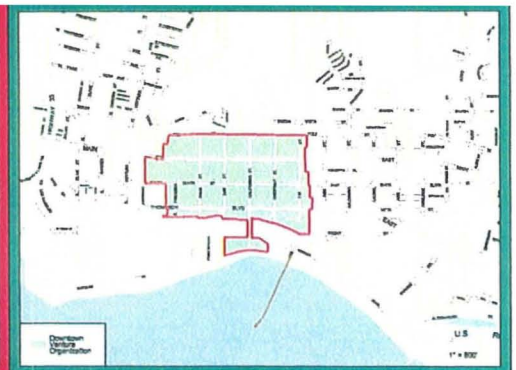
Downtown Specific Plan



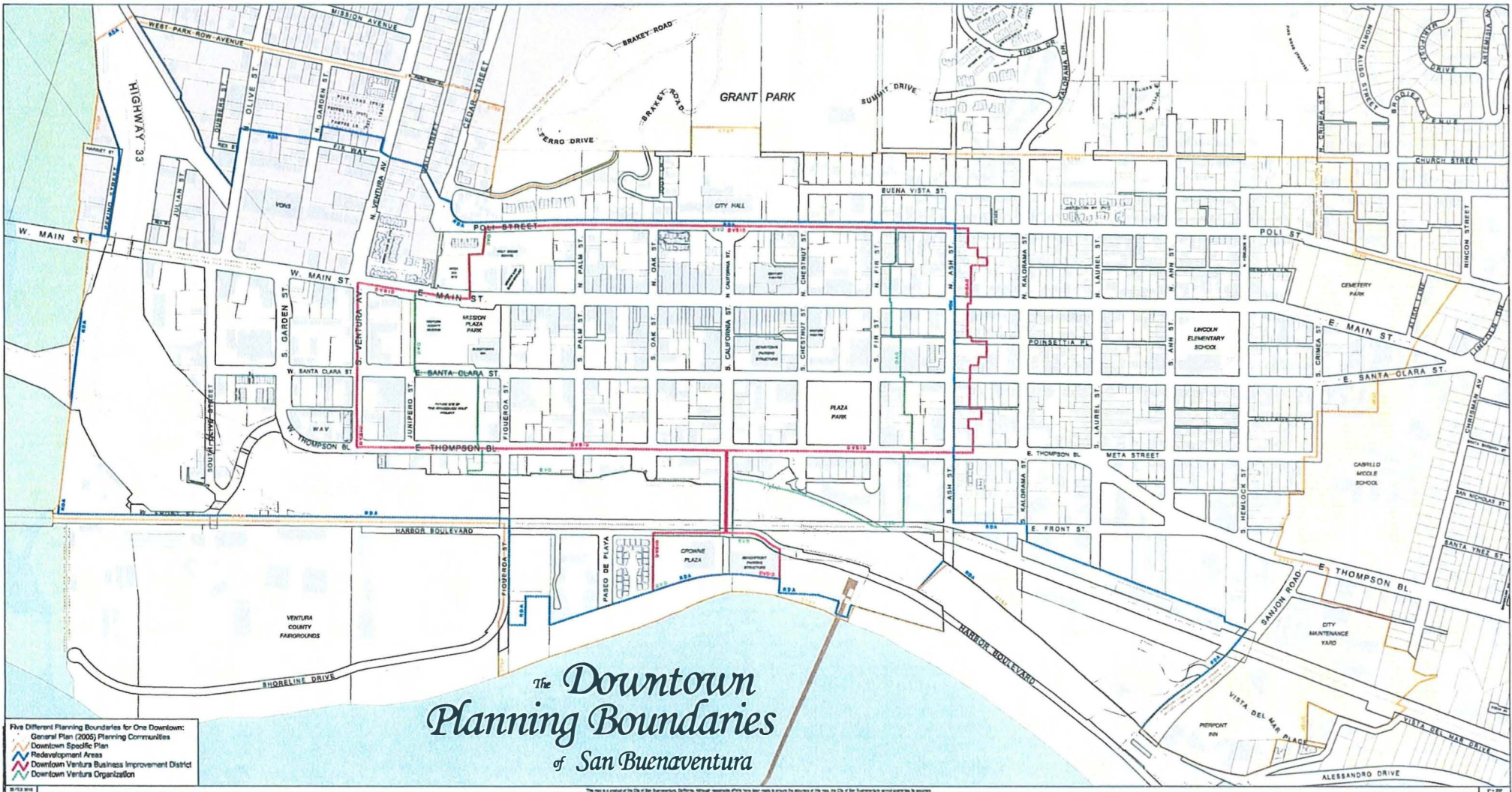
Downtown Redevelopment Area

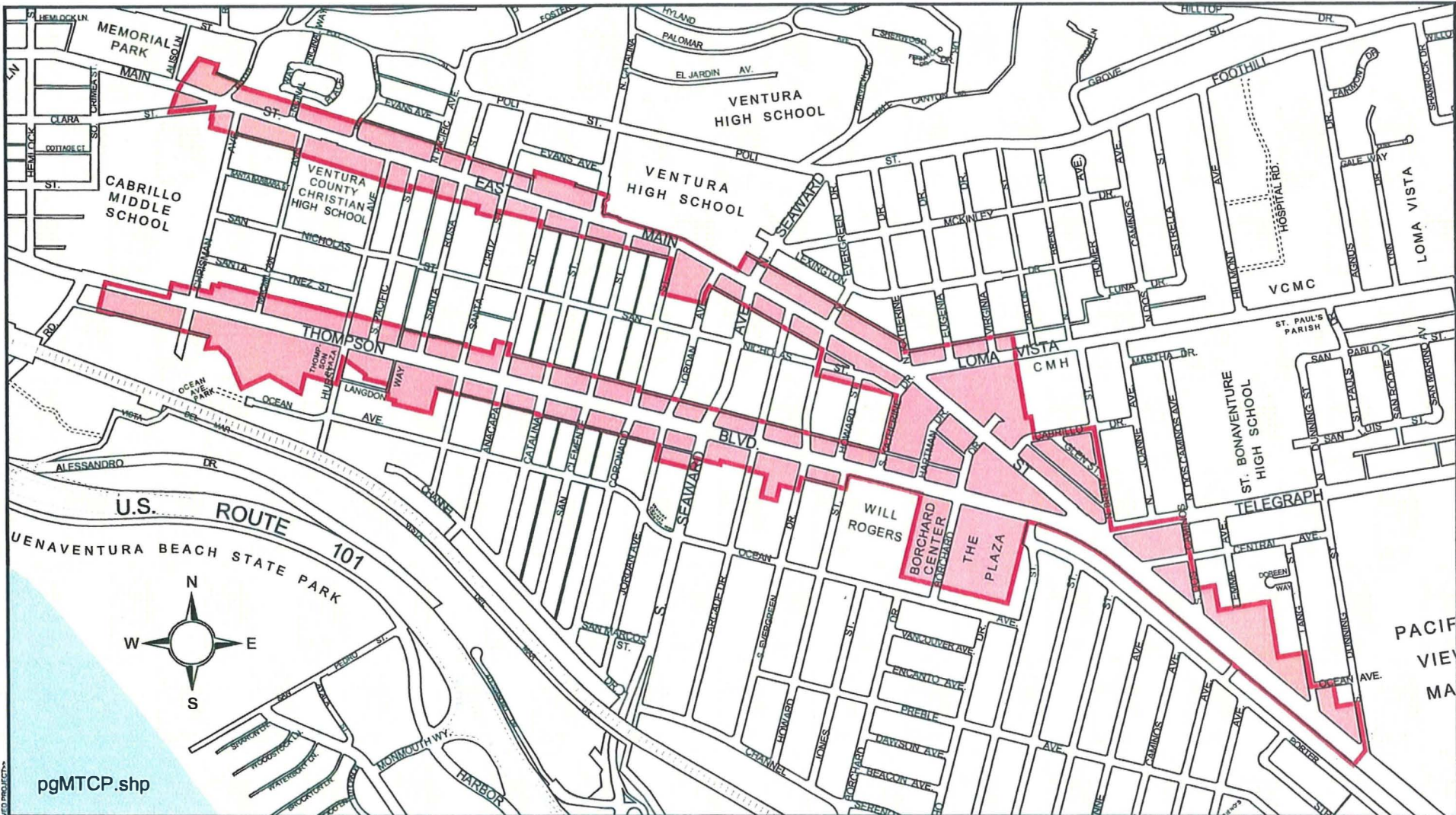


Downtown Business Improvement District



Downtown Ventura Organization





pgMTCP.shp

3 NOV 2010

This map is a product of the City of San Buenaventura, California. Although reasonable efforts have been made to ensure the accuracy of this map, the City of San Buenaventura cannot guarantee its accuracy.

1" = 800'

**Historical Sales Tax Performance Downtown and Mid-Town Geo Areas (See Attached Maps)
2001 through 2010**

Geo Area	Year	1st Qtr. Geo Area	1st Qtr. Citywide	% Of Citywide Total 1st Qtr.	2nd Qtr. Geo Area	2nd Qtr. Citywide	% Of Citywide Total 2nd Qtr.	3rd Qtr. Geo Area	3rd Qtr. Citywide	% Of Citywide Total 3rd Qtr.	4th Qtr. Geo Area	4th Qtr. Citywide	% Of Citywide Total 4th Qtr.	YTD Total Geo Area	YTD Total Citywide	% Of YTD Total Citywide
Redev - Merged Downtown (1997)	2010	\$ 283,834	\$ 3,774,979	7.52%	\$ 291,307	\$ 3,954,991	7.37%	\$ -	\$ -	0.00%	\$ -	\$ -	0.00%	\$ 575,141	\$ 7,729,970	7.44%
Redev - Merged Downtown (1997)	2009	\$ 287,460	\$ 3,814,765	7.54%	\$ 302,793	\$ 3,964,374	7.64%	\$ 317,616	\$ 4,229,632	7.51%	\$ 320,150	\$ 4,243,708	7.54%	\$ 1,228,019	\$ 16,252,479	7.56%
Redev - Merged Downtown (1997)	2008	\$ 321,741	\$ 4,553,805	7.07%	\$ 340,148	\$ 4,965,702	6.85%	\$ 344,356	\$ 4,806,621	7.16%	\$ 333,898	\$ 4,599,909	7.26%	\$ 1,340,143	\$ 18,926,037	7.08%
Redev - Merged Downtown (1997)	2007	\$ 302,256	\$ 5,026,948	6.01%	\$ 329,015	\$ 5,241,659	6.28%	\$ 337,096	\$ 5,226,236	6.45%	\$ 356,344	\$ 5,346,011	6.67%	\$ 1,324,711	\$ 20,840,854	6.36%
Redev - Merged Downtown (1997)	2006	\$ 281,827	\$ 4,848,330	5.81%	\$ 315,403	\$ 5,308,442	5.94%	\$ 330,461	\$ 5,403,613	6.12%	\$ 339,149	\$ 5,514,807	6.15%	\$ 1,266,840	\$ 21,075,192	6.01%
Redev - Merged Downtown (1997)	2005	\$ 257,681	\$ 4,560,071	5.65%	\$ 288,937	\$ 5,132,940	5.63%	\$ 311,316	\$ 5,428,581	5.73%	\$ 322,598	\$ 5,325,783	6.06%	\$ 1,180,532	\$ 20,447,375	5.77%
Redev - Merged Downtown (1997)	2004	\$ 236,530	\$ 4,474,376	5.29%	\$ 257,471	\$ 4,876,275	5.28%	\$ 278,625	\$ 5,031,572	5.54%	\$ 302,228	\$ 5,305,050	5.70%	\$ 1,074,854	\$ 19,687,273	5.46%
Redev - Merged Downtown (1997)	2003	\$ 203,461	\$ 4,081,601	4.98%	\$ 215,390	\$ 4,528,683	4.76%	\$ 238,176	\$ 4,729,012	5.04%	\$ 267,362	\$ 4,854,461	5.51%	\$ 924,389	\$ 18,193,757	5.08%
Redev - Merged Downtown (1997)	2002	\$ 203,032	\$ 3,870,930	5.25%	\$ 220,951	\$ 4,321,754	5.11%	\$ 230,121	\$ 4,471,618	5.15%	\$ 241,103	\$ 4,812,386	5.01%	\$ 895,207	\$ 17,476,688	5.12%
Redev - Merged Downtown (1997)	2001	\$ 212,617	\$ 3,983,732	5.34%	\$ 228,326	\$ 4,320,454	5.28%	\$ 230,322	\$ 4,269,606	5.39%	\$ 236,860	\$ 4,679,282	5.06%	\$ 908,125	\$ 17,253,074	5.26%

**Historical Sales Tax Performance Downtown and Mid-Town Geo Areas (See Attached Maps)
2001 through 2010**

Geo Area	Year	1st Qtr. Geo Area	1st Qtr. Citywide	% Of Citywide Total 1st Qtr.	2nd Qtr. Geo Area	2nd Qtr. Citywide	% Of Citywide Total 2nd Qtr.	3rd Qtr. Geo Area	3rd Qtr. Citywide	% Of Citywide Total 3rd Qtr.	4th Qtr. Geo Area	4th Qtr. Citywide	% Of Citywide Total 4th Qtr.	YTD Total Geo Area	YTD Total Citywide	% Of YTD Total Citywide
Redev - Downtown	2010	\$ 272,207	\$ 3,774,979	7.21%	\$ 275,823	\$ 3,954,991	6.97%	\$ -	\$ -	0.00%	\$ -	\$ -	0.00%	\$ 548,030	\$ 7,729,970	7.09%
Redev - Downtown	2009	\$ 274,683	\$ 3,814,765	7.20%	\$ 289,078	\$ 3,964,374	7.29%	\$ 303,814	\$ 4,229,632	7.18%	\$ 308,321	\$ 4,243,708	7.27%	\$ 1,175,896	\$ 16,252,479	7.24%
Redev - Downtown	2008	\$ 305,590	\$ 4,553,805	6.71%	\$ 322,626	\$ 4,965,702	6.50%	\$ 327,728	\$ 4,806,621	6.82%	\$ 319,112	\$ 4,599,909	6.94%	\$ 1,275,056	\$ 18,926,037	6.74%
Redev - Downtown	2007	\$ 284,941	\$ 5,026,948	5.67%	\$ 312,449	\$ 5,241,659	5.96%	\$ 319,178	\$ 5,226,236	6.11%	\$ 340,157	\$ 5,346,011	6.36%	\$ 1,256,725	\$ 20,840,854	6.03%
Redev - Downtown	2006	\$ 269,012	\$ 4,848,330	5.55%	\$ 302,349	\$ 5,308,442	5.70%	\$ 313,752	\$ 5,403,613	5.81%	\$ 325,207	\$ 5,514,807	5.90%	\$ 1,210,320	\$ 21,075,192	5.74%
Redev - Downtown	2005	\$ 244,415	\$ 4,560,071	5.36%	\$ 272,303	\$ 5,132,940	5.31%	\$ 298,423	\$ 5,428,581	5.50%	\$ 310,675	\$ 5,325,783	5.83%	\$ 1,125,816	\$ 20,447,375	5.51%
Redev - Downtown	2004	\$ 226,507	\$ 4,474,376	5.06%	\$ 245,205	\$ 4,876,275	5.03%	\$ 265,343	\$ 5,031,572	5.27%	\$ 290,022	\$ 5,305,050	5.47%	\$ 1,027,077	\$ 19,687,273	5.22%
Redev - Downtown	2003	\$ 196,829	\$ 4,081,601	4.82%	\$ 209,542	\$ 4,528,683	4.63%	\$ 227,527	\$ 4,729,012	4.81%	\$ 256,056	\$ 4,854,461	5.27%	\$ 889,954	\$ 18,193,757	4.89%
Redev - Downtown	2002	\$ 196,434	\$ 3,870,930	5.07%	\$ 214,527	\$ 4,321,754	4.96%	\$ 222,020	\$ 4,471,618	4.97%	\$ 233,235	\$ 4,812,386	4.85%	\$ 866,216	\$ 17,476,688	4.96%
Redev - Downtown	2001	\$ 205,810	\$ 3,983,732	5.17%	\$ 220,966	\$ 4,320,454	5.11%	\$ 222,561	\$ 4,269,606	5.21%	\$ 231,511	\$ 4,679,282	4.95%	\$ 880,848	\$ 17,253,074	5.11%

**Historical Sales Tax Performance Downtown and Mid-Town Geo Areas (See Attached Maps)
2001 through 2010**

Geo Area	Year	1st Qtr. Geo Area	1st Qtr. Citywide	% Of Citywide Total 1st Qtr.	2nd Qtr. Geo Area	2nd Qtr. Citywide	% Of Citywide Total 2nd Qtr.	3rd Qtr. Geo Area	3rd Qtr. Citywide	% Of Citywide Total 3rd Qtr.	4th Qtr. Geo Area	4th Qtr. Citywide	% Of Citywide Total 4th Qtr.	YTD Total Geo Area	YTD Total Citywide	% Of YTD Total Citywide
Redev - Mission Plaza	2010	\$ 116	\$ 3,774,979	0.00%	\$ 142	\$ 3,954,991	0.00%	\$ -	\$ -	0.00%	\$ -	\$ -	0.00%	\$ 258	\$ 7,729,970	0.00%
Redev - Mission Plaza	2009	\$ 1,763	\$ 3,814,765	0.05%	\$ 640	\$ 3,964,374	0.02%	\$ 149	\$ 4,229,632	0.00%	\$ 454	\$ 4,243,708	0.01%	\$ 3,006	\$ 16,252,479	0.02%
Redev - Mission Plaza	2008	\$ 2,854	\$ 4,553,805	0.06%	\$ 2,818	\$ 4,965,702	0.06%	\$ 1,803	\$ 4,806,621	0.04%	\$ 1,733	\$ 4,599,909	0.04%	\$ 9,208	\$ 18,926,037	0.05%
Redev - Mission Plaza	2007	\$ 3,341	\$ 5,026,948	0.07%	\$ 2,547	\$ 5,241,659	0.05%	\$ 2,393	\$ 5,226,236	0.05%	\$ 3,399	\$ 5,346,011	0.06%	\$ 11,680	\$ 20,840,854	0.06%
Redev - Mission Plaza	2006	\$ 2,745	\$ 4,848,330	0.06%	\$ 2,762	\$ 5,308,442	0.05%	\$ 3,883	\$ 5,403,613	0.07%	\$ 1,841	\$ 5,514,807	0.03%	\$ 11,231	\$ 21,075,192	0.05%
Redev - Mission Plaza	2005	\$ 2,842	\$ 4,560,071	0.06%	\$ 3,033	\$ 5,132,940	0.06%	\$ 2,779	\$ 5,428,581	0.05%	\$ 3,488	\$ 5,325,783	0.07%	\$ 12,142	\$ 20,447,375	0.06%
Redev - Mission Plaza	2004	\$ 189	\$ 4,474,376	0.00%	\$ 2,802	\$ 4,876,275	0.06%	\$ 3,301	\$ 5,031,572	0.07%	\$ 3,467	\$ 5,305,050	0.07%	\$ 9,759	\$ 19,687,273	0.05%
Redev - Mission Plaza	2003	\$ 1,631	\$ 4,081,601	0.04%	\$ 1,910	\$ 4,528,683	0.04%	\$ 1,819	\$ 4,729,012	0.04%	\$ 1,940	\$ 4,854,461	0.04%	\$ 7,300	\$ 18,193,757	0.04%
Redev - Mission Plaza	2002	\$ 1,965	\$ 3,870,930	0.05%	\$ 2,075	\$ 4,321,754	0.05%	\$ 2,210	\$ 4,471,618	0.05%	\$ 2,187	\$ 4,812,386	0.05%	\$ 8,437	\$ 17,476,688	0.05%
Redev - Mission Plaza	2001	\$ 1,967	\$ 3,983,732	0.05%	\$ 2,040	\$ 4,320,454	0.05%	\$ 2,099	\$ 4,269,606	0.05%	\$ 1,930	\$ 4,679,282	0.04%	\$ 8,036	\$ 17,253,074	0.05%

**Historical Sales Tax Performance Downtown and Mid-Town Geo Areas (See Attached Maps)
2001 through 2010**

Geo Area	Year	1st Qtr. Geo Area	1st Qtr. Citywide	% Of Citywide Total 1st Qtr.	2nd Qtr. Geo Area	2nd Qtr. Citywide	% Of Citywide Total 2nd Qtr.	3rd Qtr. Geo Area	3rd Qtr. Citywide	% Of Citywide Total 3rd Qtr.	4th Qtr. Geo Area	4th Qtr. Citywide	% Of Citywide Total 4th Qtr.	YTD Total Geo Area	YTD Total Citywide	% Of YTD Total Citywide
Redev - Beachfront	2010	\$ 11,511	\$ 3,774,979	0.30%	\$ 15,342	\$ 3,954,991	0.39%	\$ -	\$ -	0.00%	\$ -	\$ -	0.00%	\$ 26,853	\$ 7,729,970	0.35%
Redev - Beachfront	2009	\$ 11,014	\$ 3,814,765	0.29%	\$ 13,075	\$ 3,964,374	0.33%	\$ 13,653	\$ 4,229,632	0.32%	\$ 11,375	\$ 4,243,708	0.27%	\$ 49,117	\$ 16,252,479	0.30%
Redev - Beachfront	2008	\$ 13,297	\$ 4,553,805	0.29%	\$ 14,704	\$ 4,965,702	0.30%	\$ 14,825	\$ 4,806,621	0.31%	\$ 13,053	\$ 4,599,909	0.28%	\$ 55,879	\$ 18,926,037	0.30%
Redev - Beachfront	2007	\$ 13,974	\$ 5,026,948	0.28%	\$ 14,019	\$ 5,241,659	0.27%	\$ 15,525	\$ 5,226,236	0.30%	\$ 12,788	\$ 5,346,011	0.24%	\$ 56,306	\$ 20,840,854	0.27%
Redev - Beachfront	2006	\$ 10,070	\$ 4,848,330	0.21%	\$ 10,292	\$ 5,308,442	0.19%	\$ 12,826	\$ 5,403,613	0.24%	\$ 12,101	\$ 5,514,807	0.22%	\$ 45,289	\$ 21,075,192	0.21%
Redev - Beachfront	2005	\$ 10,424	\$ 4,560,071	0.23%	\$ 13,601	\$ 5,132,940	0.26%	\$ 10,114	\$ 5,428,581	0.19%	\$ 8,435	\$ 5,325,783	0.16%	\$ 42,574	\$ 20,447,375	0.21%
Redev - Beachfront	2004	\$ 9,834	\$ 4,474,376	0.22%	\$ 9,464	\$ 4,876,275	0.19%	\$ 9,981	\$ 5,031,572	0.20%	\$ 8,739	\$ 5,305,050	0.16%	\$ 38,018	\$ 19,687,273	0.19%
Redev - Beachfront	2003	\$ 5,001	\$ 4,081,601	0.12%	\$ 3,938	\$ 4,528,683	0.09%	\$ 8,830	\$ 4,729,012	0.19%	\$ 9,366	\$ 4,854,461	0.19%	\$ 27,135	\$ 18,193,757	0.15%
Redev - Beachfront	2002	\$ 4,633	\$ 3,870,930	0.12%	\$ 4,349	\$ 4,321,754	0.10%	\$ 5,891	\$ 4,471,618	0.13%	\$ 5,681	\$ 4,812,386	0.12%	\$ 20,554	\$ 17,476,688	0.12%
Redev - Beachfront	2001	\$ 4,840	\$ 3,983,732	0.12%	\$ 5,320	\$ 4,320,454	0.12%	\$ 5,662	\$ 4,269,606	0.13%	\$ 3,419	\$ 4,679,282	0.07%	\$ 19,241	\$ 17,253,074	0.11%

**Historical Sales Tax Performance Downtown and Mid-Town Geo Areas (See Attached Maps)
2001 through 2010**

Geo Area	Year	1st Qtr. Geo Area	1st Qtr. Citywide	% Of Citywide Total 1st Qtr.	2nd Qtr. Geo Area	2nd Qtr. Citywide	% Of Citywide Total 2nd Qtr.	3rd Qtr. Geo Area	3rd Qtr. Citywide	% Of Citywide Total 3rd Qtr.	4th Qtr. Geo Area	4th Qtr. Citywide	% Of Citywide Total 4th Qtr.	YTD Total Geo Area	YTD Total Citywide	% Of YTD Total Citywide
Downtown Specific Plan	2010	\$ 366,080	\$ 3,774,979	9.70%	\$ 379,562	\$ 3,954,991	9.60%	\$ -	\$ -	0.00%	\$ -	\$ -	0.00%	\$ 745,642	\$ 7,729,970	9.65%
Downtown Specific Plan	2009	\$ 371,429	\$ 3,814,765	9.74%	\$ 394,578	\$ 3,964,374	9.95%	\$ 418,993	\$ 4,229,632	9.91%	\$ 419,886	\$ 4,243,708	9.89%	\$ 1,604,886	\$ 16,252,479	9.87%
Downtown Specific Plan	2008	\$ 418,264	\$ 4,553,805	9.18%	\$ 460,524	\$ 4,965,702	9.27%	\$ 465,789	\$ 4,806,621	9.69%	\$ 438,025	\$ 4,599,909	9.52%	\$ 1,782,602	\$ 18,926,037	9.42%
Downtown Specific Plan	2007	\$ 444,311	\$ 5,026,948	8.84%	\$ 478,100	\$ 5,241,659	9.12%	\$ 473,448	\$ 5,226,236	9.06%	\$ 472,233	\$ 5,346,011	8.83%	\$ 1,868,092	\$ 20,840,854	8.96%
Downtown Specific Plan	2006	\$ 404,930	\$ 4,848,330	8.35%	\$ 484,090	\$ 5,308,442	9.12%	\$ 490,818	\$ 5,403,613	9.08%	\$ 504,654	\$ 5,514,807	9.15%	\$ 1,884,492	\$ 21,075,192	8.94%
Downtown Specific Plan	2005	\$ 376,888	\$ 4,560,071	8.26%	\$ 461,193	\$ 5,132,940	8.98%	\$ 479,299	\$ 5,428,581	8.83%	\$ 465,662	\$ 5,325,783	8.74%	\$ 1,783,042	\$ 20,447,375	8.72%
Downtown Specific Plan	2004	\$ 367,531	\$ 4,474,376	8.21%	\$ 407,992	\$ 4,876,275	8.37%	\$ 430,813	\$ 5,031,572	8.56%	\$ 442,967	\$ 5,305,050	8.35%	\$ 1,649,303	\$ 19,687,273	8.38%
Downtown Specific Plan	2003	\$ 342,439	\$ 4,081,601	8.39%	\$ 371,413	\$ 4,528,683	8.20%	\$ 409,726	\$ 4,729,012	8.66%	\$ 410,479	\$ 4,854,461	8.46%	\$ 1,534,057	\$ 18,193,757	8.43%
Downtown Specific Plan	2002	\$ 316,905	\$ 3,870,930	8.19%	\$ 349,713	\$ 4,321,754	8.09%	\$ 357,323	\$ 4,471,618	7.99%	\$ 381,363	\$ 4,812,386	7.92%	\$ 1,405,304	\$ 17,476,688	8.04%
Downtown Specific Plan	2001	\$ 343,673	\$ 3,983,732	8.63%	\$ 371,062	\$ 4,320,454	8.59%	\$ 373,624	\$ 4,269,606	8.75%	\$ 368,559	\$ 4,679,282	7.88%	\$ 1,456,918	\$ 17,253,074	8.44%

**Historical Sales Tax Performance Downtown and Mid-Town Geo Areas (See Attached Maps)
2001 through 2010**

Geo Area	Year	1st Qtr. Geo Area	1st Qtr. Citywide	% Of Citywide Total 1st Qtr.	2nd Qtr. Geo Area	2nd Qtr. Citywide	% Of Citywide Total 2nd Qtr.	3rd Qtr. Geo Area	3rd Qtr. Citywide	% Of Citywide Total 3rd Qtr.	4th Qtr. Geo Area	4th Qtr. Citywide	% Of Citywide Total 4th Qtr.	YTD Total Geo Area	YTD Total Citywide	% Of YTD Total Citywide
Downtown Specific Plan (12-15-2006)	2010	\$ 371,129	\$ 3,774,979	9.83%	\$ 385,414	\$ 3,954,991	9.75%	\$ -	\$ -	0.00%	\$ -	\$ -	0.00%	\$ 756,543	\$ 7,729,970	9.79%
Downtown Specific Plan (12-15-2006)	2009	\$ 378,199	\$ 3,814,765	9.91%	\$ 402,576	\$ 3,964,374	10.15%	\$ 425,766	\$ 4,229,632	10.07%	\$ 427,652	\$ 4,243,708	10.08%	\$ 1,634,193	\$ 16,252,479	10.06%
Downtown Specific Plan (12-15-2006)	2008	\$ 427,968	\$ 4,553,805	9.40%	\$ 471,416	\$ 4,965,702	9.49%	\$ 475,840	\$ 4,806,621	9.90%	\$ 446,315	\$ 4,599,909	9.70%	\$ 1,821,539	\$ 18,926,037	9.62%
Downtown Specific Plan (12-15-2006)	2007	\$ 455,028	\$ 5,026,948	9.05%	\$ 489,196	\$ 5,241,659	9.33%	\$ 484,586	\$ 5,226,236	9.27%	\$ 484,339	\$ 5,346,011	9.06%	\$ 1,913,149	\$ 20,840,854	9.18%
Downtown Specific Plan (12-15-2006)	2006	\$ 416,080	\$ 4,848,330	8.58%	\$ 496,906	\$ 5,308,442	9.36%	\$ 505,250	\$ 5,403,613	9.35%	\$ 518,511	\$ 5,514,807	9.40%	\$ 1,936,747	\$ 21,075,192	9.19%
Downtown Specific Plan (12-15-2006)	2005	\$ 390,333	\$ 4,560,071	8.56%	\$ 473,785	\$ 5,132,940	9.23%	\$ 494,808	\$ 5,428,581	9.11%	\$ 478,091	\$ 5,325,783	8.98%	\$ 1,837,017	\$ 20,447,375	8.98%
Downtown Specific Plan (12-15-2006)	2004	\$ 377,469	\$ 4,474,376	8.44%	\$ 421,576	\$ 4,876,275	8.65%	\$ 442,918	\$ 5,031,572	8.80%	\$ 456,915	\$ 5,305,050	8.61%	\$ 1,698,878	\$ 19,687,273	8.63%
Downtown Specific Plan (12-15-2006)	2003	\$ 354,500	\$ 4,081,601	8.69%	\$ 383,555	\$ 4,528,683	8.47%	\$ 423,623	\$ 4,729,012	8.96%	\$ 424,218	\$ 4,854,461	8.74%	\$ 1,585,896	\$ 18,193,757	8.72%
Downtown Specific Plan (12-15-2006)	2002	\$ 327,490	\$ 3,870,930	8.46%	\$ 362,561	\$ 4,321,754	8.39%	\$ 371,094	\$ 4,471,618	8.30%	\$ 394,563	\$ 4,812,386	8.20%	\$ 1,455,708	\$ 17,476,688	8.33%
Downtown Specific Plan (12-15-2006)	2001	\$ 353,123	\$ 3,983,732	8.86%	\$ 382,844	\$ 4,320,454	8.86%	\$ 386,961	\$ 4,269,606	9.06%	\$ 383,186	\$ 4,679,282	8.19%	\$ 1,506,114	\$ 17,253,074	8.73%

**Historical Sales Tax Performance Downtown and Mid-Town Geo Areas (See Attached Maps)
2001 through 2010**

Geo Area	Year	1st Qtr. Geo Area	1st Qtr. Citywide	% Of Citywide Total 1st Qtr.	2nd Qtr. Geo Area	2nd Qtr. Citywide	% Of Citywide Total 2nd Qtr.	3rd Qtr. Geo Area	3rd Qtr. Citywide	% Of Citywide Total 3rd Qtr.	4th Qtr. Geo Area	4th Qtr. Citywide	% Of Citywide Total 4th Qtr.	YTD Total Geo Area	YTD Total Citywide	% Of YTD Total Citywide
Mid-Town Corridor Plan	2010	\$ 267,977	\$ 3,774,979	7.10%	\$ 272,871	\$ 3,954,991	6.90%	\$ -	\$ -	0.00%	\$ -	\$ -	0.00%	\$ 540,848	\$ 7,729,970	7.00%
Mid-Town Corridor Plan	2009	\$ 263,560	\$ 3,814,765	6.91%	\$ 285,817	\$ 3,964,374	7.21%	\$ 302,197	\$ 4,229,632	7.14%	\$ 273,964	\$ 4,243,708	6.46%	\$ 1,125,538	\$ 16,252,479	6.93%
Mid-Town Corridor Plan	2008	\$ 339,360	\$ 4,553,805	7.45%	\$ 329,200	\$ 4,965,702	6.63%	\$ 311,520	\$ 4,806,621	6.48%	\$ 295,630	\$ 4,599,909	6.43%	\$ 1,275,710	\$ 18,926,037	6.74%
Mid-Town Corridor Plan	2007	\$ 367,196	\$ 5,026,948	7.30%	\$ 394,761	\$ 5,241,659	7.53%	\$ 381,821	\$ 5,226,236	7.31%	\$ 362,664	\$ 5,346,011	6.78%	\$ 1,506,442	\$ 20,840,854	7.23%
Mid-Town Corridor Plan	2006	\$ 373,937	\$ 4,848,330	7.71%	\$ 392,916	\$ 5,308,442	7.40%	\$ 406,945	\$ 5,403,613	7.53%	\$ 395,089	\$ 5,514,807	7.16%	\$ 1,568,887	\$ 21,075,192	7.44%
Mid-Town Corridor Plan	2005	\$ 345,693	\$ 4,560,071	7.58%	\$ 398,532	\$ 5,132,940	7.76%	\$ 411,979	\$ 5,428,581	7.59%	\$ 381,181	\$ 5,325,783	7.16%	\$ 1,537,385	\$ 20,447,375	7.52%
Mid-Town Corridor Plan	2004	\$ 362,100	\$ 4,474,376	8.09%	\$ 387,322	\$ 4,876,275	7.94%	\$ 377,650	\$ 5,031,572	7.51%	\$ 379,191	\$ 5,305,050	7.15%	\$ 1,506,263	\$ 19,687,273	7.65%
Mid-Town Corridor Plan	2003	\$ 355,265	\$ 4,081,601	8.70%	\$ 359,923	\$ 4,528,683	7.95%	\$ 402,178	\$ 4,729,012	8.50%	\$ 366,137	\$ 4,854,461	7.54%	\$ 1,483,503	\$ 18,193,757	8.15%
Mid-Town Corridor Plan	2002	\$ 330,177	\$ 3,870,930	8.53%	\$ 355,934	\$ 4,321,754	8.24%	\$ 387,286	\$ 4,471,618	8.66%	\$ 384,945	\$ 4,812,386	8.00%	\$ 1,458,342	\$ 17,476,688	8.34%
Mid-Town Corridor Plan	2001	\$ 313,860	\$ 3,983,732	7.88%	\$ 333,504	\$ 4,320,454	7.72%	\$ 350,235	\$ 4,269,606	8.20%	\$ 372,720	\$ 4,679,282	7.97%	\$ 1,370,319	\$ 17,253,074	7.94%